



THERAPY EQUIPMENT LTD

2023 PRODUCT RANGE

WORLD CLASS SUCTION AND OXYGEN THERAPY



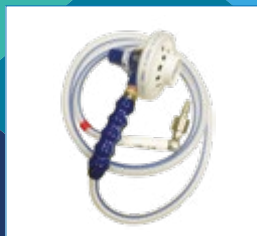
Suction
Equipment



Flowmeters



Medical Regulators



Entonox



Therapy SOS



Portable Suction Device
and Accessories



Sundries



High/Low Air-Oxygen Mixer

therapiequipment.co.uk

OUR MISSION

To design, develop and manufacture best in class products, to provide outstanding customer service and work in partnership with our healthcare partners as they aspire to deliver world-class patient care.



Established in 1983, the founders of Therapy Equipment Limited had a vision to design, develop and manufacture Suction and Oxygen Therapy products to meet the needs of healthcare professionals around the world. The company quickly gained a reputation for producing quality products backed up with outstanding customer service and with the core belief of adding real value to patient outcomes.

The company's success in the UK is complemented by a rapidly growing international business. Therapy Equipment will only partner with organisations that share their passion for delivering quality products to hospitals and other healthcare facilities supported by excellent customer care. As the company looks to the future it's continued growth and success is based on maintaining the core principles set out by the founders nearly 40 years ago.

Today Therapy Equipment prides itself as the market leading company within the UK Suction and Oxygen Therapy market, with the determination to remain healthcare's number one company of choice.

YEAR OF MANUFACTURE COLOUR CODING CHART

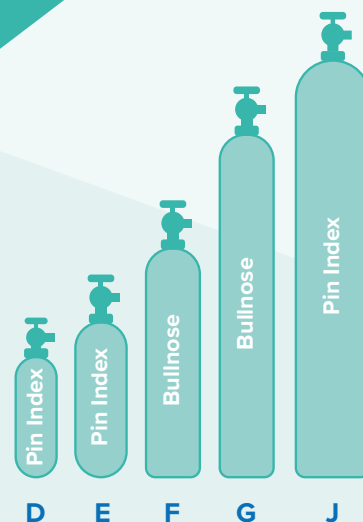
2005	2006	2007	2008	2009	2010	2011	2012	2013	2014	2015	2016	2017	2018	2019	2020	2021	2022	2023

CONTENTS



REGULATORS MEDIREGS

A complete range of regulators specifically designed for Medical Use. Each regulator has a 4 Year Warranty on Function, and comes complete with a protective, Gas Distinct Coloured plastic case.



CYLINDER CHART

The following are usual fittings for Medical Oxygen and Air Cylinders (Entonox Gas is supplied only with Pin Index fitting cylinders)

Standard Medireg range suitable for use with 137Bar Cylinder. Regulators suitable for 200Bar Cylinders are available on request.



MEDIREG WITH 3/8" OUTLET

Single Stage 'Medireg' with standard 3/8" Coned Outlet. Each regulator is pre-set to 60 PSI (4 Bar) and has a Safety Valve which will vent at 105 PSI (7 Bar).

5000	Single Stage Medireg - Bullnose - O ₂
5010	Single Stage Medireg - Bullnose - Air
5005	Single Stage Medireg - Pin Index - O ₂
5015	Single Stage Medireg - Pin Index - Air



MEDIREG AND DIAMOND RANGE FLOWMETER

Single Stage 'Medireg' with a Diamond Range 0-15 LPM Flowmeter attached.

5030	Single Stage Medireg and Diamond Flowmeter - Bullnose - O ₂
5040	Single Stage Medireg and Diamond Flowmeter - Bullnose - Air
5035	Single Stage Medireg and Diamond Flowmeter - Pin Index - O ₂
5045	Single Stage Medireg and Diamond Flowmeter - Pin Index - Air



MEDIREG AND SCHRADER VALVE

Single Stage 'Medireg' with gas distinct Schrader Valve attached.

5032	Single Stage Medireg and Schrader - Bullnose - O ₂
5042	Single Stage Medireg and Schrader - Bullnose - Air
5037	Single Stage Medireg and Schrader - Pin Index - O ₂
5047	Single Stage Medireg and Schrader - Pin Index - Air

PLEASE NOTE: ADAPTOR (PART NO. 5000-08-01) IS REQUIRED TO ATTACH A SCHRADER VALVE TO A MEDIREG

REGULATORS DIALREG

Single Stage 'Medireg' with pre-set 'dialled' flow rates.

0-15 LPM DIALREG

Settings: 0/1/2/3/4/5/6/7/8/10/12/15 LPM

5050	Single Stage Dialreg (0-15 LPM) - Bullnose - O2
5050/HUM	Dialreg & R/A Humidifier B/N 0-15LPM - O2
5060	Single Stage Dialreg (0-15 LPM) - Bullnose - Air
5054	Bullnose Dialreg (0-15 LPM) with R/A Nebuliser Adaptor
5055	Single Stage Dialreg (0-15 LPM) - Pin Index - O2
5055/HUM	Dialreg & R/A Humidifier P/I 0-15LPM - O2
5065	Single Stage Dialreg (0-15 LPM) - Pin Index - Air
5059	Pin Index Dialreg (0-15 LPM) with R/A Nebuliser Adaptor

0-15 LPM DIALREG (LOW START)

Settings: 0/0.5/0.8/1/2/4/5/6/8/10/12/15 LPM

5100	Single Stage Dialreg (0-15 LPM LS) - Bullnose - O2
5110	Single Stage Dialreg (0-15 LPM LS) - Bullnose - Air
5105	Single Stage Dialreg (0-15 LPM LS) - Pin Index - O2
5115	Single Stage Dialreg (0-15 LPM LS) - Pin Index - Air

0-1 LPM DIALREG

Settings: 0/0.1/0.2/0.3/0.4/0.5/0.6/0.7/0.8/0.9/1.0/F LPM

5070	Single Stage Dialreg (0-1 LPM) - Bullnose - O2
5080	Single Stage Dialreg (0-1 LPM) - Bullnose - Air
5075	Single Stage Dialreg (0-1 LPM) - Pin Index - O2
5085	Single Stage Dialreg (0-1 LPM) - Pin Index - Air

2/4 LPM DIALREG

Settings: 0/2/4 LPM

5120	Single Stage Dialreg (2/4 LPM) - Bullnose - O2
5130	Single Stage Dialreg (2/4 LPM) - Bullnose - Air
5125	Single Stage Dialreg (2/4 LPM) - Pin Index - O2
5135	Single Stage Dialreg (2/4 LPM) - Pin Index - Air

OTHER DIALREG CONFIGURATIONS

DIALREG WITH 3/8" OUTLET

5053	Single Stage Dialreg (0-15 LPM) & 3/8 Outlet - Bullnose - O2
5063	Single Stage Dialreg (0-15 LPM) & 3/8 Outlet - Bullnose - Air
5058	Single Stage Dialreg (0-15 LPM) & 3/8 Outlet - Pin Index - O2
5068	Single Stage Dialreg (0-15 LPM) & 3/8 Outlet - Pin Index - Air

DIALREG & SCHRADER

5051	Single Stage Dialreg (0-15 LPM) & Schrader - Bullnose - O2
5061	Single Stage Dialreg (0-15 LPM) & Schrader - Bullnose - Air
5056	Single Stage Dialreg (0-15 LPM) & Schrader - Pin Index - O2
5066	Single Stage Dialreg (0-15 LPM) & Schrader - Pin Index - Air



PLEASE NOTE: ALL UNITS MANUFACTURED SINCE 1999 HAVE A F ("FLUSH") FLOW SET AT APPROXIMATELY 3LPM INCORPORATED INTO THE UNIT, TO ASSIST WITH THE REMOVAL OF THE REGULATOR FROM THE CYLINDER. PLEASE TAKE CARE WHEN REPLACING DAMAGED KNOBS TO ENSURE THE NEW KNOB STATES THE SAME FLOWRATES AS THE OLD.



MANUFACTURED
IN THE UK



6101/P



6111/P



6112/P



6180/P

THE STANDARD LENGTH IS
1.5 METRES, HOWEVER OTHER
LENGTHS ARE AVAILABLE.

REGULATORS SCHRADERS

Gas Distinct Non Return Valve for use at Low Pressures. The Standard fitting has a 1/4 BSP Male Thread (1/4 BSP Female Thread available on request).

SINGLE SCHRADER VALVES WITH PLASTIC COLLAR

6101/P	Schrader Valve - O2
6102/P	Schrader Valve - 4 Bar Air
6103/P	Schrader Valve - 7 Bar Air
6104/P	Schrader Valve - Vacuum
6105/P	Schrader Valve - Nitrous Oxide (N2O)
6118/P	Schrader Valve - O2/N2O ("Entonox")
6115/P	Schrader Valve for Medireg - O2
6119/P	Schrader Valve for Medireg - 4 Bar Air

TWIN SCHRADER OUTLETS ("SPLITTERS")

Valves with Plastic Collar. Provides the ability to take two supplies from one outlet.

6107/P	Twin Schrader on Back Bar with 3/8" Nut (No Probe) - O2
6108/P	Twin Schrader on Back Bar with 3/8" Nut (No Probe) - 4 Bar Air
6109/P	Twin Schrader on Back Bar with 3/8" Nut (No Probe) - 7 Bar Air
6110/P	Twin Schrader on Back Bar with 3/8" Nut (No Probe) - Vacuum
6111/P	Twin Schrader on Back Bar with Probe - O2
6112/P	Twin Schrader on Back Bar with Probe - 4 Bar Air
6113/P	Twin Schrader on Back Bar with Probe - 7 Bar Air
6114/P	Twin Schrader on Back Bar with Probe - Vacuum

MINI SCHRADER

6140	Mini Schrader Valve - O2
6141	Mini Schrader Valve - Air
6145	Mini Schrader Indirect Probe - O2
6146	Mini Schrader Indirect Probe - Air

RAIL MOUNTED SCHRADER VALVES

Rail Mounted Schrader Valve(s) complete with 1.5M Hose/Probe. Other lengths are available on request.

6130	Rail Mounted Single Schrader Valve - O2
6131	Rail Mounted Single Schrader Valve - MA4
6132	Rail Mounted Single Schrader Valve - Vacuum
6120	Rail Mounted Twin Schrader Valve - O2
6121	Rail Mounted Twin Schrader Valve - MA4
6123	Rail Mounted Twin Schrader Valve - Vacuum

SCHRADER EXTENSION LEADS

Hose Assembly with Indirect Probe connected to either Single or Twin Gas Distinct Schrader Valve and Plastic Collar.



Standard 1.5m Single Schrader Extension Lead

6180/P	Single Oxygen
6181/P	Single 4 Bar Air
6182/P	Single 7 Bar Air
6183/P	Single Vacuum
6184/P	Single Nitrous Oxide (N2O)
6185/P	Single "Entonox" (O2/N2O)

2m/3m/4m Single Schrader Extension Lead

	2 metre (Part No.)	3 metre (Part No.)	4 metre (Part No.)
Oxygen	6180/P/2M	6180/P/3M	6180/P/4M
MA4	6181/P/2M	6181/P/3M	6181/P/4M
MA7	6182/P/2M	6182/P/3M	6182/P/4M
Vacuum	6183/P/2M	6183/P/3M	6183/P/4M
N2O	6184/P/2M	6184/P/3M	6184/P/4M
Entonox	6185/P/2M	6185/P/3M	6185/P/4M

Standard 1.5m Twin Schrader Extension Lead

6195/P	Twin Oxygen Plastic
6196/P	Twin 4 Bar Air Plastic
6197/P	Twin 7 Bar Air Plastic
6198/P	Twin Vacuum Plastic
6199/P	Twin Nitrous Oxide (N2O) Plastic

2m/3m/4m Twin Schrader Extension Lead

	2 metre (Part No.)	3 metre (Part No.)	4 metre (Part No.)
Oxygen	6195/P/2M	6195/P/3M	6195/P/4M
MA4	6196/P/2M	6196/P/3M	6196/P/4M
MA7	6197/P/2M	6197/P/3M	6197/P/4M
Vacuum	6198/P/2M	6198/P/3M	6198/P/4M

REGULATORS ACCESSORIES

CYLINDER KEYS

6150/5	Bullnose Cylinder Key (Spindle Key) (Pack of 5)
6151	Pin Index Cylinder Key (T Type)
6153	Ratchet Cylinder Key
6154	Combination Spanner (Open Spanner and Bullnose Key combined)
6155/5	Chain to attach key to Regulator (Pack of 5)
6157/5	Consumable Pin Index Key (Pack of 5)

SEALS

6159/10	Bodok Seal (Pack of 10)
6304/10	Bullnose O Ring (Pack of 10)
6099/10	Vapouriser O Ring (Pack of 10)



MANUFACTURED
IN THE UK

FLOWMETERS DIAMOND RANGE

The Diamond Range Flowmeter is colour coded in accordance with the gas being used, and has been designed with maximum safety in mind.



9506

It is manufactured from high strength plastics. The build up of Static Electricity is also minimised due to the use of specially selected materials.

The Diamond Range Flowmeter is supplied with a 7 year warranty on function and accidental damage



9505



9501



9506/AG

0-15 LPM DIAMOND RANGE FLOWMETER WITH 3/8 NUT

New 0-15 LPM Diamond Range Flowmeter with standard 3/8 'Coned' fitting Nut.

- | | |
|------|---|
| 9501 | 0-15 LPM Diamond Range Flowmeter - O ₂ |
| 9502 | 0-15 LPM Diamond Range Flowmeter - Air |

0-15 LPM DIAMOND RANGE FLOWMETER & PROBE

New 0-15 LPM Diamond Range Flowmeter with BS Standard Probe fitting. (O₂ Flowmeter supplied with integral Probe that cannot be removed).

- | | |
|---------------|---|
| 9505 | 0-15 LPM Diamond Range Flowmeter & Probe - O ₂ |
| 9506 | 0-15 LPM Diamond Range Flowmeter & Probe - Air |
| 9506/AG | 0-15 LPM Diamond Range Flowmeter & Probe & Airguard - Air |
| 9510 | 0-15 LPM Diamond Range Flowmeter & Probe & Humidifier - O ₂ |
| 9520 | 0-15 LPM Diamond Range Flowmeter & Probe & Humidifier - Air |
| 9501/
8501 | 0-15 LPM Diamond Range Flowmeter with Extended Probe - O ₂ |
| 9565 | 0-15 LPM Diamond Range Flowmeter and Schrader Valve with Probe - O ₂ |

TWIN 0-15 LPM DIAMOND RANGE FLOWMETERS

Full range of 'with and without' Probe Twin Diamond Flowmeters, to enable two Flowmeters to be used from one outlet. Units supplied without Probe are supplied with 3/8" Coned fitting Nut.

9550	Twin Diamond Range Flowmeters on Back Bar - O2
9551	Twin Diamond Range Flowmeters on Back Bar - Air
9555	Twin Diamond Range Flowmeters with Probe - O2
9556	Twin Diamond Range Flowmeters with Probe - Air
9560	Twin Diamond Range Flowmeter & Probe & 2 x Humidifiers
9550/ 8501	Twin Diamond Range Flowmeters with Extended Probe - O2

RAIL MOUNTED DIAMOND RANGE FLOWMETERS

Single/Twin Diamond Range Flowmeters supplied with Rail Clamp and 1.5 metres of Hose/Indirect Probe.

Standard 1.5m Hose Assembly

9620	Rail Mounted Single Diamond Range Flowmeter - O2
9621	Rail Mounted Single Diamond Range Flowmeter - Air
9625	Rail Mounted Twin Diamond Range Flowmeters - O2
9626	Rail Mounted Twin Diamond Range Flowmeters - Air

2m Hose Assembly

9620/2M	Rail Mounted Single Diamond Range Flowmeter with 2M Hose - O2
9621/2M	Rail Mounted Single Diamond Range Flowmeter with 2M Hose - Air
9625/2M	Rail Mounted Twin Diamond Range Flowmeters with 2M Hose - O2
9626/2M	Rail Mounted Twin Diamond Range Flowmeters with 2M Hose - Air

3m Hose Assembly

9620/3M	Rail Mounted Single Diamond Range Flowmeter with 3M Hose - O2
9621/3M	Rail Mounted Single Diamond Range Flowmeter with 3M Hose - Air
9625/3M	Rail Mounted Twin Diamond Range Flowmeters with 3M Hose - O2
9626/3M	Rail Mounted Twin Diamond Range Flowmeters with 3M Hose - Air

V DOVETAIL MOUNTED DIAMOND RANGE FLOWMETERS

Single/Twin Diamond Range Flowmeters supplied with V Dovetail and 1.5 metres of Hose/Indirect Probe. O2 and Air units available. Other Hose Lengths available on request.

9630	V Dovetail Single Diamond Range Flowmeter - O2
9631	V Dovetail Single Diamond Range Flowmeter - Air
9635	V Dovetail Twin Diamond Range Flowmeter - O2
9636	V Dovetail Twin Diamond Range Flowmeter - Air

0-30 LPM FLOWMETER

9595	0-30 LPM Diamond Flowmeter with Probe - O2
------	--



9555



9620



9625



9635



9595



MANUFACTURED
IN THE UK



6560



6580



9583



9587



9576

FLOWMETERS DIRECT DIAL / LOW FLOW

DIRECT DIAL FLOWMETER (DIAL-A-FLOW WITH PROBE)

Direct fitting unit with pre-set 'dialled' flow rates. The Direct Dial Flowmeter is compact in design and is supplied with optional facemask/tubing hook. Each unit is fully colour coded in accordance with the gas being used, and is supplied with a 7 Year Function Warranty. Low Flow Units have Flush Flowrate (F) which is set at approximately 3 LPM. Now available calibrated for use with Oxygen or Medical Air.

Oxygen

6560	Direct Dial Unit (0-15 LPM) - O ₂ (Settings: OFF/1/2/3/4/5/6/7/8/10/12/15)
6568	Direct Dial Unit (0-2.5 LPM) - O ₂ (Settings: OFF/0.25/0.50/0.75/1.00/1.25/1.50/1.75/2.00/2.25/2.50/F)
6561	Direct Dial Unit (0-1 LPM) - O ₂ (Settings: OFF/0.1/0.2/0.3/0.4/0.5/0.6/0.7/0.8/0.9/1.0/F)
6564	Direct Dial Unit (0-0.5 LPM) - O ₂ (Settings: OFF/0.05/0.10/0.15/0.20/0.25/0.30/0.35/0.40/0.50/F)
6557	Direct Dial Unit (0-15 LPM) - O ₂ with 3/8 Nut
6558	Twin Direct Dial Unit (0-15 LPM) on Back Bar with Probe - O ₂
6640	Rail Mounted Direct Dial Unit (0-15 LPM) - O ₂
6641	Rail Mounted Twin Direct Dial Unit (0-15 LPM) - O ₂

Medical Air

6580	Direct Dial Unit (0-15 LPM) - AIR (Settings: OFF/1/2/3/4/5/6/7/8/10/12/15)
------	--

DIAMOND RANGE LOW FLOW FLOWMETERS

Fully Colour Coded range of Precision Flowmeters. The Diamond Range is supplied with a 7 Year function and Accidental Damage Warranty. Accuracy \pm 10% of Total Scale. Normal usage - Neonatal/Paediatric.

0-500cc Diamond Flowmeter - 1st Setting: 50cc (100cc Graduations between 100-500 cc)

9582	0-500cc Diamond Low Flow Flowmeter with 3/8" Nut (Green Body)
9583	0-500cc Diamond Low Flow Flowmeter with Probe
9533	0-500cc Diamond Low Flow Flowmeter - Rail Mounted
9584	Twin 0-500cc Diamond Low Flow Flowmeter & Probe
9559	Twin Diamond Flowmeter (0-15LPM, 0-500cc) & Probe - O ₂

0-2.5 LPM Diamond Flowmeter - 1st Setting: 500cc (100cc Graduations between 0.5-2.5 LPM)

9586	0-2.5 LPM Diamond Low Flow Flowmeter with 3/8" Nut (Pink Body)
9587	0-2.5 LPM Diamond Low Flow Flowmeter with Probe
9531	0-2.5 LPM Diamond Low Flow Flowmeter - Rail Mounted
9594	Twin 0-2.5 LPM Diamond Low Flow Flowmeter & Probe
9557	Twin Diamond Flowmeter (0-15LPM, 0-2.5LPM) & Probe - O ₂
9530	0-2.5 LPM Diamond Flowmeter & Probe with Humidifier - O ₂

0-5 LPM Diamond Flowmeter - 1st Setting: 500cc (200cc Graduations between 1-5 LPM)

9575	0-5 LPM Diamond Low Flow Flowmeter with 3/8" Nut (Beige Body)
9576	0-5 LPM Diamond Low Flow Flowmeter with Probe
9532	0-5 LPM Diamond Low Flow Flowmeter - Rail Mounted
9577	Twin 0-5 LPM Diamond Low Flow Flowmeter & Probe
9558	Twin Diamond Flowmeter (0-15LPM, 0-5LPM) & Probe - O ₂

FLOWMETERS ACCESSORIES

INDIRECT RAIL MOUNTING ASSEMBLIES

Complete assemblies to allow existing equipment to be Rail Mounted. Each assembly is supplied with Indirect Block/Rail Clamp and 1.5 Metres of Hose and Probe.

6610	Indirect Rail Mounting Kit - Flowmeter - O2 (3/8 Male)
6611	Indirect Rail Mounting Kit - Flowmeter - Air (3/8 Male)
6615	Indirect Rail Mounting Kit - Ohmeda Suction (1/8 Male)
6619	Indirect Rail Mounting Kit - Schrader Valve - O2 (1/4 Male)

HUMIDIFIERS

225cc 'Bubble Through' Humidifier.
Male thread to connect directly onto Flowmeter Outlet.

6740	Humidifier Kit (Humidifier, Tubing and Facemask)
6741	Humidifier Kit (225cc Bubble Type) - Autoclavable (Male Thread)
6742	Humidifier Kit (225cc Bubble Type) - (Female Thread)
6747	Humidifier Red Top Only (Female Thread)

FLOWMETER/DIALREG ACCESSORIES

Old Style Flowmeter Tubing Nipple

6600/10	Old Style Flowmeter Tubing Nipple - Pack of 10
6600/25	Old Style Flowmeter Tubing Nipple - Pack of 25
6600/50	Old Style Flowmeter Tubing Nipple - Pack of 50

Flowmeter Nebuliser Adaptor

6601/10	Flowmeter Nebuliser Adaptor - Pack of 10
6601/25	Flowmeter Nebuliser Adaptor - Pack of 25
6601/50	Flowmeter Nebuliser Adaptor - Pack of 50

Diamond Range Flowmeter Accessories

6604/10	Diamond Range Flowmeter Tubing Nipple - Pack of 10
6604/25	Diamond Range Flowmeter Tubing Nipple - Pack of 25
6604/50	Diamond Range Flowmeter Tubing Nipple - Pack of 50
6604/Black/10	Diamond Range Flowmeter Tubing Nipple (Black) - Pack of 10
9501-26	Outlet Adaptor (to convert Male Outlet on Flowmeter to Female)

Dialreg/Flowreg/Direct Dial Flowmeter Bayonet Tubing Nipple

5050-02-02/10	Diamond Range Flowmeter Tubing Nipple - Pack of 10
5050-02-02/25	Diamond Range Flowmeter Tubing Nipple - Pack of 25
5050-02-02/50	Diamond Range Flowmeter Tubing Nipple - Pack of 50

5050-17 Right Angled Humidifier Adaptor for Dialreg

AIR GUARD FOR AIR FLOWMETERS

The Airguard is a hinged flap that fits directly to the bottom of the Flowmeter, between the Body and Tubing Nipple, thereby reducing the risk of incorrect selection. The Airguard is supplied with an 'O' Ring, which when fitted, keeps the guard in place even with the Tubing Nipple removed. (An Air Flowmeter is not included).

6501-50	Universal Airguard for Air Flowmeter (With Cable Tie)
9502-60	Airguard for Diamond Range Flowmeter with 2mm Recess & 'O' Ring
9502-60/Disc	Diamond Airguard Disc with 2mm Recess & 'O' Ring



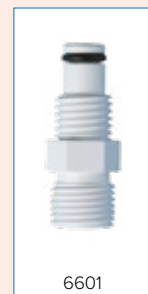
6610



6741



6600



6601



6604



5050-02-02



9502-60



6501-50



MANUFACTURED
IN THE UK

SUCTION DIAMOND RANGE

The Diamond Suction range is manufactured from high strength plastics and is colour coded to assist the end user with Suction level recognition.



7701



Each Unit is supplied with an integral Pipeline Protector, which not only supplies 100% guaranteed protection against Pipeline Contamination, but also goes **PINK** to show that the filter has been contaminated and requires changing. All models fully comply with the latest International Standards and are CE Marked.

The Diamond Range suction unit is supplied with a 7 year warranty on function and accidental damage



7705

DIAMOND HIGH SUCTION

0 to -625mmHG (-80kPa) Suction Range.

- | | |
|------|---|
| 7701 | Diamond High Suction Controller with Direct fitting probe |
| 7702 | Diamond High Suction Controller with 9/16 LH Fitting |
| 7703 | Diamond High Suction Controller with 1/8 Female Fitting |
| 7705 | Rail Mounted Diamond High Suction Controller complete with 1.5 metres of Hose and Indirect Probe |
| 7706 | V Dovetail Diamond High Suction Controller complete with 1.5 metres of Hose and Indirect Probe |
| 7715 | Complete Direct Diamond High Suction Assembly <ul style="list-style-type: none"> - Direct Diamond High Suction Controller - 1.8 Litre Polysulphone Receiver Jar Assembly - Wall Plate and fixing screws - Suction Tubing for connecting Controller and Jar |
| 7707 | Complete Rail Mounted Diamond High Suction Assembly <ul style="list-style-type: none"> - Rail Mounted Diamond High Suction Controller - 1.8 Litre Polysulphone Receiver Jar Assembly - Wall Plate and fixing screws - Suction Tubing for connecting Controller and Jar |
| 7708 | Complete V Dovetail Diamond High Suction Assembly <ul style="list-style-type: none"> - V Dovetail Diamond High Suction Controller - 1.8 Litre Polysulphone Receiver Jar Assembly - Wall Plate and fixing screws - Suction Tubing for connecting Controller and Jar |

DIAMOND LOW SUCTION

0 to -150mmHG (-20kPa) Suction Range. Relief Valve (full relief) set at -165mmHG.

7720	Diamond Low Suction Controller with Direct fitting probe
7721	Diamond Low Suction Controller with 9/16 LH Fitting
7725	Rail Mounted Diamond Low Suction Controller complete with 1.5 metres of Hose and Indirect Probe
7726	V Dovetail Diamond Low Suction Controller complete with 1.5 metres of Hose and Indirect Probe
7736	Complete Direct Diamond Low Suction Assembly <ul style="list-style-type: none"> - Direct Diamond Low Suction Controller - 1.8 Litre Polysulphone Receiver Jar Assembly - Wall Plate and fixing screws - Suction Tubing for connecting Controller and Jar
7727	Complete Rail Mounted Diamond Low Suction Assembly <ul style="list-style-type: none"> - Rail Mounted Diamond Low Suction Controller - 1.8 Litre Polysulphone Receiver Jar Assembly - Wall Plate and fixing screws - Suction Tubing for connecting Controller and Jar
7728	Complete V Dovetail Diamond Low Suction Assembly <ul style="list-style-type: none"> - V Dovetail Diamond Low Suction Controller - 1.8 Litre Polysulphone Receiver Jar Assembly - Wall Plate and fixing screws - Suction Tubing for connecting Controller and Jar

DIAMOND THORACIC SUCTION

0 to -60cmH₂O (-6kPa) Suction Range. Relief Valve (full relief) set at -65cmH₂O.

7740	Diamond Thoracic Suction Controller with Direct fitting probe
7742	Diamond Thoracic Suction Controller with 9/16 LH Fitting
7745	Rail Mounted Diamond Thoracic Suction Controller complete with 1.5 metres of Hose and Indirect Probe



7720



7725



7745



MANUFACTURED
IN THE UK



SUCTION DIAMOND RANGE CONTINUED

DIAMOND PACKAGE

Discounted price for the 'package' of a Diamond Suction Controller and Diamond Flowmeter.

- | | |
|------|--|
| 7880 | Diamond High Direct Suction and 0-15 LPM Diamond Flowmeter and Probe |
| 7890 | Diamond High Direct Suction and Twin 0-15 LPM Diamond Flowmeter on Back Bar with Probe |

DIAMOND TWIN SUCTION

Different variations of Suction Controllers mounted on Straight Backbar.

- | | |
|------|--|
| 7765 | Diamond Twin Suction Controllers (High/High) on Straight Backbar with Direct Vacuum Probe |
| 7770 | Diamond Twin Suction Controllers (High/Low) on Straight Backbar with Direct Vacuum Probe |
| 7772 | Diamond Twin Suction Controllers (High/Thoracic) on Straight Backbar with Direct Vacuum Probe |
| 7780 | Rail Mounted Diamond Twin Suction Controllers (High/High) on Straight Backbar with 1.5m Hose/Probe |
| 7775 | Rail Mounted Diamond Twin Suction Controllers (High/Low) on Straight Backbar with 1.5m Hose/Probe |
| 7777 | Rail Mounted Diamond Twin Suction Controllers (High/Thoracic) on Straight Backbar with Indirect Vacuum Probe |

DIAMOND THEATRE SUCTION

A sturdy 3ft Trolley with 5 castor base complete with Angled Diamond High Suction Controller, 5 Metres of Vacuum Hose and Indirect Probe. The unit has two 1.8 Litre Polysulphone Jar Assemblies and a change over valve fitted to switch flows easily between Jars. The unit can be customised to take alternative collection Jars.



7760

- | | |
|--------------|---|
| 7760 | Theatre Suction Unit, complete |
| 7761 | Theatre Suction Unit complete with twin Suction Controllers |
| 7763 | Theatre Suction Unit without Jars, fitted with V Brackets |
| 7763/ABB | Theatre Suction Unit without Jars, fitted with Abbots Brackets |
| 7763/ SERRES | Theatre Suction Unit without Jars, fitted with Serres Brackets |
| 7766 | Theatre Suction Unit, with Single Suction Controller and 4 x Receiver Jars |
| 7767 | Theatre Suction Unit, with Single Suction Controller and 4 x V Brackets (without Jars) |
| 7768 | Theatre Suction Unit, complete with 0-15 LPM Flowmeter (Both units supplied with 5M Hose/Probe) |

SUCTION “TEK 2000”

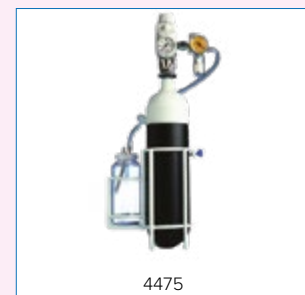
EMERGENCY SUCTION KITS

A portable Suction and Oxygen Therapy Kit run from a gas cylinder. Ideal for emergency situations or for use on Theatre transport trolleys. Miniature Injector Suction Unit (On/Off Only) is set to draw in excess of -500mmHG. As the unit is designed for emergency use, the suction unit does not have a fitted Pipeline Protector. Oxygen Usage: 40 LPM.

4475	Pin Index TEK 2000 Emergency Suction Kit - TEK 2000 Emergency Suction Unit - 0-15 LPM Dialreg with 3/8" Outlet - Pin Index - 1/2 Litre Suction Jar and Connection Tubing - Bed End Cradle to carry complete kit
4485	Bullnose TEK 2000 Emergency Suction Kit - Contents as 4475 except Bullnose Dialreg
4455	TEK 2000 Emergency Suction Unit with 3/8" Nut Only
4457	Emergency Injector Suction Unit with O2 Direct Probe
5058/ 4455	0-15 LPM Pin Index Dialreg with Emergency Injector Suction Unit
5053/ 4455	0-15 LPM Bullnose Dialreg with Emergency Injector Suction Unit
4495	Complete Pin Index TEK 2000 in Carry Case - Special 'Swivel' Pin Index Dialreg (0-15 LPM) - Emergency Injector Suction Unit - 1/2 Litre Jar, Oxygen and Suction Tubing
4460	Rail Mounted 0-15 LPM Direct Dial Flowmeter/Emergency Injector Suction Unit, and angled O2 Schrader Valve complete with 1.5m Hose/Probe
4462	Rail Mounted 0-15 LPM Flowmeter/Emergency Injector Suction Unit, and angled O2 Schrader Valve complete with 1.5m Hose/Probe
4465	Rail Mounted 0-15 LPM Flowmeter/Emergency Injector Suction Unit complete with 1.5m Hose/Probe
4467	Rail Mounted 0-15 LPM Direct Dial Flowmeter/Emergency Injector Suction Unit complete with 1.5m Hose/Probe



4455



4495



MANUFACTURED
IN THE UK

NEW FOR OLD

Please contact Therapy Equipment Ltd to see if you qualify for further discounts through the new for old scheme.

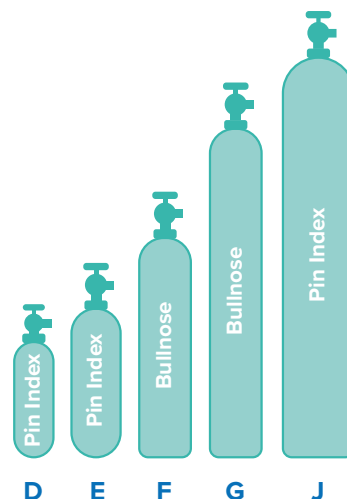


WHEN ORDERING PLEASE USE "PART NO./AIR"



CYLINDER CHART

The following are usual fittings for Medical Oxygen and Air Cylinders (Entonox Gas is supplied only with Pin Index fitting cylinders)



REGULATORS

MEDIREG

5225	New for Old Medireg - Bullnose - O2
5227	New for Old Medireg - Bullnose - O2 - 10 off
5230	New for Old Medireg - Pin Index - O2
5232	New for Old Medireg - Pin Index - O2 - 10 off

MEDIREG AND DIAMOND RANGE FLOWMETER

5255	New for Old Medireg & Flowmeter - Bullnose - O2
5257	New for Old Medireg & Flowmeter - Bullnose - O2 - 10 off
5260	New for Old Medireg & Flowmeter - Pin Index - O2
5262	New for Old Medireg & Flowmeter - Pin Index - O2 - 10 off

MEDIREG AND SCHRADER

5265	New for Old Medireg & Schrader - Bullnose - O2
5267	New for Old Medireg & Schrader - Bullnose - O2 - 10 off
5270	New for Old Medireg & Schrader - Pin Index - O2
5272	New for Old Medireg & Schrader - Pin Index - O2 - 10 off

DIALREG

5245	New for Old Dialreg (0-15 LPM) - Bullnose - O2
5247	New for Old Dialreg (0-15 LPM) - Bullnose - O2 - 10 off
5250	New for Old Dialreg (0-15 LPM) - Pin Index - O2
5252	New for Old Dialreg (0-15 LPM) - Pin Index - O2 - 10 off

DIALREG AND SCHRADER

5280	New for Old Dialreg (0-15 LPM) & Schrader - Bullnose - O2
5282	New for Old Dialreg (0-15 LPM) & Schrader - Bullnose - O2 - 10 off
5285	New for Old Dialreg (0-15 LPM) & Schrader - Pin Index - O2
5287	New for Old Dialreg (0-15 LPM) & Schrader - Pin Index - O2 - 10 off

AVAILABLE IN
THE UK ONLY



FLOWMETERS

9211	NFO 0-15 LPM Diamond Range Flowmeter with 3/8" Nut - O2
9211/AIR	NFO 0-15 LPM Diamond Range Flowmeter with 3/8" Nut - Air
9213	NFO 0-15 LPM Diamond Range Flowmeter with 3/8" Nut - O2 - 10 off
9213/AIR	NFO 0-15 LPM Diamond Range Flowmeter with 3/8" Nut - Air - 10 off
9216	NFO 0-15 LPM Diamond Range Flowmeter & Probe - O2
9216/AIR	NFO 0-15 LPM Diamond Range Flowmeter & Probe - Air
9217	NFO 0-15 LPM Diamond Range Flowmeter & Probe - O2 - 10 off
9217/AIR	NFO 0-15 LPM Diamond Range Flowmeter & Probe - Air - 10 off
9212	NFO Twin 0-15 LPM Diamond Range Flowmeters on Back Bar - O2 With 3/8 Nut
9212/AIR	NFO Twin 0-15 LPM Diamond Range Flowmeters on Back Bar - Air
9214	NFO Twin 0-15 LPM Diamond Range Flowmeters & Probe - O2
9214/AIR	NFO Twin 0-15 LPM Diamond Range Flowmeters & Probe - Air
9218	NFO Rail Mounted Single Diamond Range Flowmeters - O2
9218/AIR	NFO Rail Mounted Single Diamond Range Flowmeters - Air
9219	NFO Rail Mounted Twin Diamond Range Flowmeters - O2
9219/AIR	NFO Rail Mounted Twin Diamond Range Flowmeters - Air

ALL NFO
FLOWMETERS
SUPPLIED
WITHOUT
SAFETY VALVE



9211



AVAILABLE IN
THE UK ONLY

ENTONOX

COMFORT RANGE

6017	New for Old O2/N2O Medireg & Schrader - Pin Index
6015	New for Old O2/N2O Demand Valve with 2 Metres of PVC Hose
6016	New for Old O2/N2O Demand Valve with 2 Metres of Silicone Hose
6013	New for Old complete Comfort Range Kit (PVC Hose)
6014	New for Old complete Comfort Range Kit (Silicone Hose)

COMFORT 4 RANGE

6216	New for Old Comfort 4 Demand Valve with 2M of Silicone Hose
6216/3M	New for Old Comfort 4 Demand Valve with 3M of Silicone Hose
6216/4M	New for Old Comfort 4 Demand Valve with 4M of Silicone Hose
6217	New for Old Comfort 4 Demand Valve with 2M of PVC Hose
6217/3M	New for Old Comfort 4 Demand Valve with 3M of PVC Hose
6217/4M	New for Old Comfort 4 Demand Valve with 4M of PVC Hose



6216

SUCTION EQUIPMENT

DIAMOND SUCTION CONTROLLERS

7850	New for Old High Direct Suction Controller
7852	New for Old High Rail Mounted Suction Controller
7885	New for Old Diamond Package (Single Flowmeter)
7895	New for Old Diamond Package (Twin Flowmeter)
7860	New for Old Low Direct Suction Controller
7862	New for Old Low Rail Mounted Suction Controller
7870	New for Old Thoracic Direct Suction Controller
7872	New for Old Thoracic Rail Mounted Suction Controller



7850



AVAILABLE IN
THE UK ONLY

SUCTION THERAPY SOS

The Therapy SOS (Suction Oxygen System) is a neat fully integrated Oxygen and Suction supply device, which is normally powered from an Oxygen Gas Cylinder.

It is ideal for all Patient Transfer and Resuscitation Trolleys, or anywhere within a medical environment where piped oxygen or vacuum is unavailable.



The unit can be supplied with a variety of fixtures, and carries a 7 Year Function Warranty. The unit is CE Marked, and fully conforms to British Standard. The standard unit is supplied with a 1.5 Metre Hose, however other lengths are available on request.

STANDARD 1.5M HOSE ASSEMBLY

4550	Rail Clamp Mounted Therapy SOS Unit
4555	Rail Clamp Mounted Therapy SOS Unit for Huntleigh Trolleys
4556	Rail Clamp Mounted Therapy SOS Unit with Right Angled 1.5m Hose Assembly
4559	Therapy SOS Unit with Mounting Bracket suitable for Anetic Aid Trolley (QA3 V2 & V3) & Right Angled 1.5m Hose Assembly
4560	Pole Clamp Mounted Therapy SOS Unit (Horizontal Pole)
4565	Pole Clamp Mounted Therapy SOS Unit (Vertical Pole)
4570	V Dovetail Mounted Therapy SOS Unit

SUCTION ACCESSORIES

PIPELINE PROTECTORS (HYDROPHOBIC FILTERS)

Self contained Hydrophobic Filter which prevents any passage of liquid. This guarantees total protection of the hospital pipeline. Suggested change: High Usage Area - Every 3 months; Low Usage Area - Annually or variable depending on hospital infection control policy.

4900	Bayonet Pipeline Protector (Therapy Suction) - Pack of 10
4901	Threaded Pipeline Protector (East/Old Ohmeda) - Pack of 10
4902	Small Pipeline Protector (Ohmeda Intl/Electric Suction) - Pack of 10
7900	Diamond Suction Pipeline Protector - Pack of 10
4903	Bacteriological In-Line Disc Filter - Pack of 24 (Non-Hydrophobic)

1.8 LITRE RECEIVER JARS

Manufactured in fully autoclavable Polysulphone with integral 'V' Socket. The lid is a 'pressure cooker' type bayonet fitting onto a silicone seal. Features are that it can be used as a re-usable jar or in conjunction with a Therapy Equipment Disposable Jar Liner.

4800	1.8 Litre Polysulphone Jar Assembly complete
------	--

0.5 LITRE SUCTION JARS

Generally for use with Injector Suction. Does not have a float however is fully autoclavable.

4507	0.5 Litre Suction Jar
4506	0.5 Litre Suction Jar Holder (Wall Mounted)
4508	0.5 Litre Suction Jar and Wall Mounted Holder
4509	0.5 Litre Suction Jar and Rail Mounted Holder

DISPOSABLE JAR LINER

Manufactured for use with the Therapy Equipment Jar (cannot be used with other Jars) Features include:

- Non Return Valve on Patient inlet.
- Hydrophobic Filter to prevent effluent passing to controller.
- Filter Cap allowing full use of the liner before valve shut off.
- The unit is fully sealable after use.

4807	Disposable Jar Liner (Standard) - 1.8 Litre - Box of 50
------	---

SUCTION ACCESSORIES

4302	Plastic Suction Tubing (30 Metre Coil)
4315	Yellow Plastic Suction Tubing (30 Metre Coil)
4260-05	Plastic V Bracket
4505	Plastic V Dovetail
4510	Abbots Bracket (Parallel)
4701-12	Microbiological Filter for Thoracic Suction Unit
4701-09	Filter Jar Only - Thoracic Suction Unit
4701-68	Complete Filter Bowl Assembly - Thoracic Suction Unit
4760-02	New/Replacement Changeover Valve for Theatre Suction Unit
4504	Suction Connector Taper
4260-60	Serres Jar Adaptor
4305	1m Yellow Tubing/Connector (Pack of 10)
4450-24	Rail Clamp - 32W.T1



4900



7900



4800



4260 - 05



4315/ 4302



MANUFACTURED
IN THE UK

ENTONOX COMFORT

Extensive range of equipment for use with “Entonox” (50% O₂/50% N₂O). The range can either be used from a Cylinder or from a Medical Gas Pipeline.

All devices are colour coded in accordance with market standards. The Demand Valve is **fully autoclavable**, meets the relevant European Standards and supplied with a 4 Year Function Warranty (No accidental damage warranty). Hose Assemblies (either PVC or Silicone) can be supplied up to a maximum of 4 Metres.



6000 Comfort Range Kit with PVC Hose

- Single Stage Medireg & Schrader - Pin Index - O₂/N₂O
- Demand Valve with 2 Metres of PVC Hose & Probe
- Facemask - Mouthpiece x 5

6002 Comfort Range Kit with Silicone Hose

- Single Stage Medireg & Schrader - Pin Index - O₂/N₂O
- Demand Valve with 2 Metres of Silicone Hose & Probe
- Facemask - Mouthpiece x 5

6095 Complete Comfort Range in Carry Case (PVC Hose)

- Special 'Swivel' Pin Index Medireg & Schrader - O₂/N₂O
- Demand Valve with 2 Metres of PVC Hose & Probe
- Facemask - Mouthpiece x 5

6097 Complete Comfort Range in Carry Case (Silicone Hose)

- Special 'Swivel' Pin Index Medireg & Schrader - O₂/N₂O
- Demand Valve with 2 Metres of Silicone Hose & Probe
- Facemask - Mouthpiece x 5



6007



6000-19

DEMAND VALVE ONLY (PIPELINE MODEL)

Supplied with Facemask/Mouthpiece

- | | |
|---------|---|
| 6005 | O ₂ /N ₂ O Demand Valve only with 2 Metres of PVC Hose/Probe |
| 6005/3M | O ₂ /N ₂ O Demand Valve only with 3 Metres of PVC Hose/Probe |
| 6005/4M | O ₂ /N ₂ O Demand Valve only with 4 Metres of PVC Hose/Probe |
| 6007 | O ₂ /N ₂ O Demand Valve only with 2 Metres of Silicone Hose/Probe |
| 6007/3M | O ₂ /N ₂ O Demand Valve only with 3 Metres of Silicone Hose/Probe |
| 6007/4M | O ₂ /N ₂ O Demand Valve only with 4 Metres of Silicone Hose/Probe |

COMFORT RANGE (“ENTONOX”) REGULATOR ONLY

- | | |
|------|--|
| 6010 | Single Stage Medireg & Schrader - Pin Index - O ₂ /N ₂ O |
|------|--|

CARRY CASES

- | | |
|---------|---|
| 6000-19 | Comfort Range Carry Case Only (For D Size Entonox Cylinder) |
| 6025 | Carry Bag Only (For CD Size Entonox Cylinder) |
| 6028 | Carry Bag for 2 x CD Entonox Cylinders |

ENTONOX COMFORT 4

The Comfort 4 Demand Valve is supplied with a 4 Year Warranty.

Similar to the existing Comfort Range, the Demand Valve is available with either a PVC or Silicone Hose, up to a maximum length of 4 Metre (Standard is 2 Metres). The Comfort 4 Range is NOT AUTOCLAVABLE, and should be used with a single use Bacterial Filter.

CYLINDER MODEL

Comfort 4 Kit

- Single Stage Medireg & Schrader - Pin Index - O2/N2O
- Comfort 4 Demand Valve & Silicone or PVC Hose/Probe
- Mouthpiece x 5
- Flo-Guard Comfort 4 Filter

6200	Comfort 4 Kit with 2 Metres of PVC Hose
6200/3M	Comfort 4 Kit with 3 Metres of PVC Hose
6200/4M	Comfort 4 Kit with 4 Metres of PVC Hose

6202	Comfort 4 Kit with 2 Metres of Silicone Hose
6202/3M	Comfort 4 Kit with 3 Metres of Silicone Hose
6202/4M	Comfort 4 Kit with 4 Metres of Silicone Hose

PIPELINE MODEL

Comfort 4 Demand Valve

- Comfort 4 Demand Valve & Silicone or PVC Hose/Probe
- Mouthpiece
- Flo-Guard Comfort 4 Filter

6205	Comfort 4 Kit Demand Valve with 2 Metres of PVC Hose
6205/3M	Comfort 4 Kit Demand Valve with 3 Metres of PVC Hose
6205/4M	Comfort 4 Kit Demand Valve with 4 Metres of PVC Hose

6207	Comfort 4 Kit Demand Valve with 2 Metres of Silicone Hose
6207/3M	Comfort 4 Kit Demand Valve with 3 Metres of Silicone Hose
6207/4M	Comfort 4 Kit Demand Valve with 4 Metres of Silicone Hose

CONVERSION KITS

Each Comfort Range Demand Valve can be converted into Comfort 4 units.

Each conversion kit contains:

- New Hose Assembly (Silicone or PVC) with Handle/Probe
- Outlet Cap
- Mouthpiece
- Flo-Guard Comfort 4 Filter

6205-30	Comfort 4 Conversion Kit with 2 Metres of Silicone Hose
6205-30/3	Comfort 4 Conversion Kit with 3 Metres of Silicone Hose
6205-30/4	Comfort 4 Conversion Kit with 4 Metres of Silicone Hose

6205-40	Comfort 4 Conversion Kit with 2 Metres of PVC Hose
6205-40/3	Comfort 4 Conversion Kit with 3 Metres of PVC Hose
6205-40/4	Comfort 4 Conversion Kit with 4 Metres of PVC Hose



MANUFACTURED
IN THE UK



8700/8706



8650



8750-03



8750-20/24

SUNDRIES HOSE ASSEMBLIES

HIGH PRESSURE ANTI STATIC HOSE (PIPELINE HOSE)

A complete range of coloured anti-static hoses designed to identify the gas being used. All hose is now Phthalate Free and Anti-Microbial.

8700	White - O ₂	metre
8701	Yellow - Vacuum	metre
8702	Black - Air	metre
8703	Blue - N ₂ O	metre
8706	Blue/White - N ₂ O/O ₂ ("Entonox")	metre

NIST/PROBE HOSE ASSEMBLY

NIST Connector - Specified length of Hose - Gas Distinct Probe.

	4 Metre (Part No.)	3 metre (Part No.)	2 Metre (Part No.)
Oxygen	8650	8650/3M	8650/2M
4 Bar Air	8651	8651/3M	8651/2M
7 Bar Air	8652	8652/3M	8652/2M
Vacuum	8653	8653/3M	8653/2M
N ₂ O	8654	8654/3M	8654/2M

DISS/PROBE HOSE ASSEMBLY

DISS Connector - Specified length of Hose - Gas Distinct Probe.

	4 Metre (Part No.)	3 metre (Part No.)	2 Metre (Part No.)
Oxygen	8660	8660/3M	8660/2M
Air	8661	8661/3M	8661/2M
Vacuum	8663	8663/3M	8663/2M
N ₂ O	8662	8662/3M	8662/2M

1/8" BSP MALE / PROBE HOSE ASSEMBLY

1/8" BSP Male Connector - Specified length of Hose - Gas Distinct Probe. Suitable for replacing Hose Assemblies on Rail Mounted Equipment and Theatre Suction Units.

6660	1.5m Replacement Hose for O ₂ Rail Mounted Flowmeter
6660/2M	2m Replacement Hose for O ₂ Rail Mounted Flowmeter
6662	1.5m Replacement Hose for Air Rail Mounted Flowmeter
6662/2M	2m Replacement Hose for Air Rail Mounted Flowmeter
4701-79	1.5m Replacement Hose for Rail Mounted Suction Unit
4701-89	2m Replacement Hose for Rail Mounted Suction Unit
4701-99	5m Replacement Hose for Theatre Suction Unit

FERRULES

8750-01	Narrow Bore Ferrule (Medipart)
8750-03	Wide Bore Ferrule (Therapy Equipment Hose)

HOSE SLEEVING

8750-20	Printed Heat Shrink Sleeve - O ₂
8750-21	Printed Heat Shrink Sleeve - 4 Bar Air
8750-22	Printed Heat Shrink Sleeve - Vacuum
8750-23	Printed Heat Shrink Sleeve - N ₂ O
8750-24	Printed Heat Shrink Sleeve - 7 Bar Air

SUNDRIES TROLLEYS AND CRADLES

CYLINDER TROLLEYS

A full range of sturdy powder coated metal trolleys designed to carry a single cylinder.

8800	Cylinder Trolley - J Size (240 cu ft)
8801	Cylinder Trolley - G Size (120 cu ft)
8802	Cylinder Trolley - F Size (48 cu ft) (Suitable for HX Cylinder)
8803	Cylinder Trolley - E Size (24 cu ft)
8805	Cylinder Trolley - Dumpy F Size

CYLINDER RINGS AND BRACKETS

Rings and Brackets are available for securing cylinders against a wall.

8822	Cylinder Wall Bracket Only
8823	Cylinder Ring - Size C
8824	Cylinder Ring - Size D/E
8825	Cylinder Ring - Size F (Suitable for HX Cylinder)
8826	Cylinder Ring - Size G
8827	Cylinder Ring - Size J

CYLINDER CRADLES

Cylinder Cradles manufactured in white plastic coated Metal.

8849	Cylinder Cradle - Bed End - Size C
8850	Cylinder Cradle - Bed End - Size D
8851	Cylinder Cradle - Bed End - Size E
8858	Cylinder Cradle - Bed End - Size CD
8854	Cylinder Cradle - Wall Fix - Size C
8855	Cylinder Cradle - Wall Fix - Size D
8856	Cylinder Cradle - Wall Fix - Size E
8863	Cylinder Cradle - Wall Fix - Size CD
8859	Cylinder Cradle - Rail Mounted - Size C
8860	Cylinder Cradle - Rail Mounted - Size D
8861	Cylinder Cradle - Rail Mounted - Size E
8862	Cylinder Cradle - Rail Mounted - Size CD

CATHETER HOLDERS

Catheter Holders manufactured in white plastic coated wire.

2525	Large Catheter basket
2526	Small Catheter basket
2528	Rail Mounted /Large Catheter basket
2529	Rail Mounted /Small Catheter basket



8801



8823/8827



8850



8855



2526



MANUFACTURED
IN THE UK



SUNDRIES PROBES

PROBES

Mark 4 British Standard Probes, with Gas Distinct 'collar' to British Standard.

8501	O2 Probe - 3/8 BSP Male
8501-01	O2 Probe - 1/8 NPT Male
8501-02	O2 Probe - 1/8 BSP Male
8502	MA4 (4 Bar Air) Probe - 3/8 BSP Male
8502-01	MA4 (4 Bar Air) Probe - 1/8 BSP Male
8502-02	MA4 (4 Bar Air) Probe - 1/8 NPT Male
8503	MA7 (7 Bar Air) Probe - 3/8 BSP Male
8503-01	MA7 (7 Bar Air) Probe - 1/8 BSP Male
8504	Vacuum Probe - 3/8 BSP Male
8505	N2O Probe - 3/8 BSP Male
8506	Vacuum Probe with Left Hand Running Nut (BOC)
8510	O2 Probe - Indirect
8511	MA4 (4 Bar Air) Probe - Indirect
8512	MA7 (7 Bar Air) Probe - Indirect
8513	Vacuum Probe - Indirect
8514	N2O Probe - Indirect
8515	O2/N2O ("Entonox") Probe - Indirect

DRAEGER PROBES

Probes for use with 'Draeger' type outlets.

8550	O2 Draeger Probe - Direct
8551	MA4 (4 Bar Air) Draeger Probe - Direct
8552	Vacuum Draeger Probe - Direct
8555	O2 Draeger Probe - Indirect
8556	MA4 (4 Bar Air) Draeger Probe - Indirect
8557	Vacuum Draeger Probe - Indirect

PURITAN BENNETT PROBES

Probes for use with 'Puritan Bennett' type outlets.

8570	O2 Puritan Bennett Probe - Direct
8571	MA4 (4 Bar Air) Puritan Bennett Probe - Direct
8572	Vacuum Puritan Bennett Probe - Direct
8573	O2 Puritan Bennett Probe - Indirect
8574	MA4 (4 Bar Air) Puritan Bennett Probe - Indirect
8575	Vacuum Puritan Bennett Probe - Indirect

NIST NUT AND NIPPLE (PIPELINE)

NIST (Non Interchangeable Standard Thread) is a complete range of Gas Distinct fittings designed to avoid the possibilities of incorrect connection.

8600	NIST Nut and Nipple - O2
8601	NIST Nut and Nipple - 4 Bar Air
8602	NIST Nut and Nipple - 7 Bar Air
8603	NIST Nut and Nipple - Vacuum
8604	NIST Nut and Nipple - N2O

RAILS RAIL SYSTEM AND CLAMPS

THERAPY EQUIPMENT RAIL 2000 SYSTEM

A single extruded aluminium section designed to fit directly to the wall, without the requirement for additional mounting brackets and fixing kits. Most types of Rail Clamp can be used and the rail is suitable for both General and Heavy Duty Purposes. The Rail is supplied cut into lengths of up to 3 Metres, inclusive of all trim, infill and caps and Wall Fixings (there are no extras).

2120	3 Metre Rail Pack
	- 3 Metres Rail
	- 6 Metres Featheredge Rail Trim
	- 3 Metres Blue Facing Strip
	- 8 Fixing Screws
	- 2 End Caps

2120/0.5 0.5 Metre Rail Pack inclusive

2120/0.8 0.8 Metre Rail Pack inclusive

2120/1 1 Metre Rail Pack inclusive

2120/2 2 Metre Rail Pack inclusive

Rail can be supplied cut to any length required - A £2.50 per length cutting charge will apply. Lengths in excess of 3 Metres will require a Joining Kit

2120-01	Rail Only (3 Metre Length)
2120-02	Featheredge Rail Trim (3 Metre Length)
2120-03	Blue Facing Strip (3 Metre Length)
2120-04	End Caps (Pair)
2120-05	Joining Kits (2 Tubes)

WALL FIXINGS

2130	Standard Screw and Raw Plug
2131	Spring Toggle and Screw

RAIL CLAMPS

2001	Universal Rail Clamp - 22mm
2002	Universal Rail Clamp - 44mm (Horizontal Holes)
2050	Universal Rail Clamp - 44mm (Vertical Holes)
2003	Universal Rail Clamp with V Bracket
2004	Universal Rail Clamp with General Purpose Hook
2005	Universal Rail Clamp with Block for 9.5mm Peg
2006	Universal Rail Clamp with Block for 12.5mm Peg
2009	Universal Rail Clamp - 38mm (Countersunk Holes)
2011	Universal Rail Clamp - 17mm (Countersunk Holes)
2003/ABB	Universal Rail Clamp with Abbots Bracket
2003/SERRES	Universal Rail Clamp with Serres Bracket



2120



2001



MANUFACTURED
IN THE UK



RAILS RAIL MOUNTED EQUIPMENT

All Rail Mounted equipment is supplied with a Rail Clamp, and is ready for attaching directly to the Rail. For equipment that requires a gas/vacuum supply, 1.5 Metres of Hose and Indirect Probe is supplied.

2505	Rail Mounted Carelite LED Light
2516	Rail Mounted Single Drip Stand
2524	Rail Mounted Drip Stand with 4 Hook Boom
2518	Rail Mounted Bowl
2519	Rail Mounted Large Catheter Basket
2750	Rail Mounted 3/4" Tube with twin extended Rail Clamps

REPAIRS RECONDITIONING

It is the policy of Therapy Equipment to only offer a reconditioning service on our own equipment:

- Mediregs
- Flowregs
- Dialregs
- Entonox Mediregs
- Entonox Demand Valve

Whilst we offer a damage repair service (items within 7 years old), we do not offer a reconditioning service on Suction equipment or Flowmeters. We do not offer a repair service on Suction or Flowmeters over 7 years old, or undated.

All other products sent in for repair, including old style Regulators (S60, S400M and Series 90) and other manufacturer's Suction and Flowmeters will, unless otherwise advised, be treated as New for Old. We reserve the right to adjust the price, if the unit is substantially damaged.

MEDIREG RANGE

Full Workshop Overhaul after 4-year warranty.

All internal seals and High Pressure Valve Seating are replaced, and the unit returned to the Hospital, with a renewed 4 year warranty. Every effort will be made to replace all damaged parts within the price, however should new Gauges or Metering Drums be required, these will be charged separately.

It is recommended that the Regulator be reconditioned a maximum of 2 times, giving the unit a maximum 12 year life. Units returned for reconditioning beyond 12 years old will not be reconditioned, and a New for Old replacement offered.

Medireg

Dialreg

Flowreg

Entonox Medireg

PLEASE NOTE: ALL MEDIREG RANGE EQUIPMENT RETURNED FOR DAMAGE REPAIR WILL AUTOMATICALLY BE RECONDITIONED.



AVAILABLE IN
THE UK ONLY



ENTONOX

Full Workshop Overhaul after warranty.

The Valve Seating and Seals are replaced, and the unit returned to the Hospital, with a renewed warranty. The price includes the reconditioning of the Entonox Demand Valve only, and the replacement Hose Assembly will be charged separately.

It is recommended that the Demand Valve be reconditioned a maximum of 3 times, giving the unit a maximum 12 year life. Units returned for reconditioning beyond 12 years old will not be reconditioned, and a New for Old replacement offered.

Demand Valve (Does not include Hose Replacement)

PLEASE NOTE: THE DEMAND VALVE SHOULD BE FULLY DECONTAMINATED PRIOR TO RETURNING. ANY UNIT FOUND CONTAMINATED WILL BE RETURNED UN-RECONDITIONED.



OLD STYLE FLOWMETERS/DIRECT DIAL FLOWMETERS

We are only able to offer damage repair to Therapy Equipment Flowmeters. It is not possible to recondition a Flowmeter after the 7 Year Warranty. Units received over 7 Years old, or where the date of manufacture is unknown, will not be repaired, and a New for Old replacement offered. All Damage Repairs carry a 1 Year Warranty - Function Warranty remains 7 Years from original date of manufacture.

Therapy Equipment Old Style Flowmeter

Therapy Equipment Twin Old Style Flowmeter

Therapy Equipment Low Flow Flowmeter

Therapy Equipment Direct Dial Flowmeter



DIAMOND RANGE PRODUCTS

Diamond Range Products are covered by a full 7 Year Accidental Damage and Function Warranty. Any Diamond Range Product found damaged should be returned to Therapy Equipment for a Free of Charge Repair/Replacement. All Damage Repairs carry a 1 Year Warranty - Function Warranty remains 7 Years from original date of manufacture.

Therapy Equipment Diamond Range Flowmeter

Therapy Equipment Diamond Range Suction Controller



SUCTION CONTROLLERS

We are only able to offer damage repair to Therapy Equipment Suction Controllers. It is not possible to recondition a Suction Controller after the 7 Year Warranty. Units received over 7 Years old, or where the date of manufacture is unknown, will not be repaired, and a New for Old replacement offered. All Damage Repairs carry a 1 Year Warranty - Function Warranty remains 7 Years from original date of manufacture.

Therapy Equipment High Suction Controller

Therapy Equipment Low Suction Controller

Therapy Equipment Injector Suction Controller

Therapy Equipment Emergency Injector Suction Unit

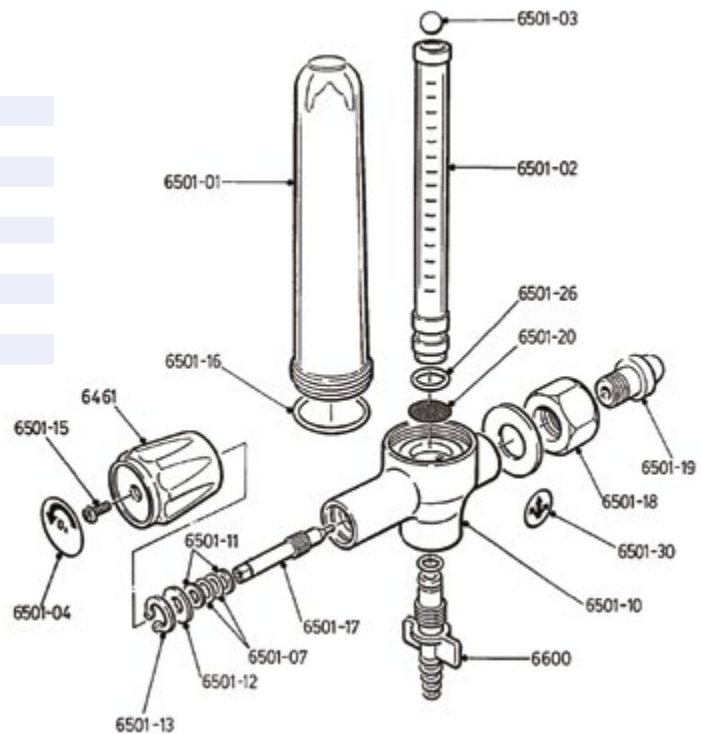
AVAILABLE IN
THE UK ONLY



SPARES 'OLD STYLE' FLOWMETER

'OLD STYLE' FLOWMETER SPARES

6501-01	Flowmeter Outer Tube
6501-02	Flowmeter Inner Tube - O2
6501-04	Flowmeter Knob Label
6461	Flowmeter Control Knob - White (O2)
6501-15	Flowmeter Control Knob Screw
6461-01	Flowmeter Control Knob - Black (Air)
6502-02	Flowmeter Inner Tube - Air
6501-18	Flowmeter Nut
6501-19	Flowmeter Inlet



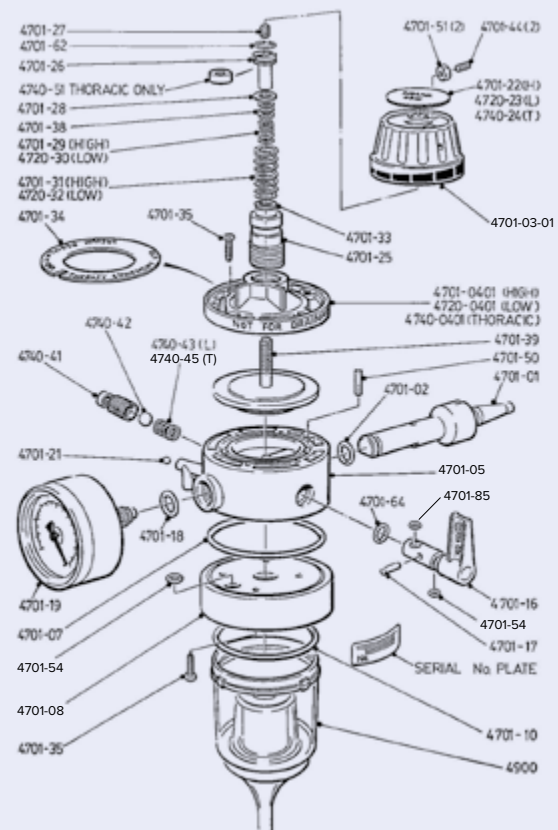
SPARES SUCTION EQUIPMENT

SUCTION CONTROLLER SPARES

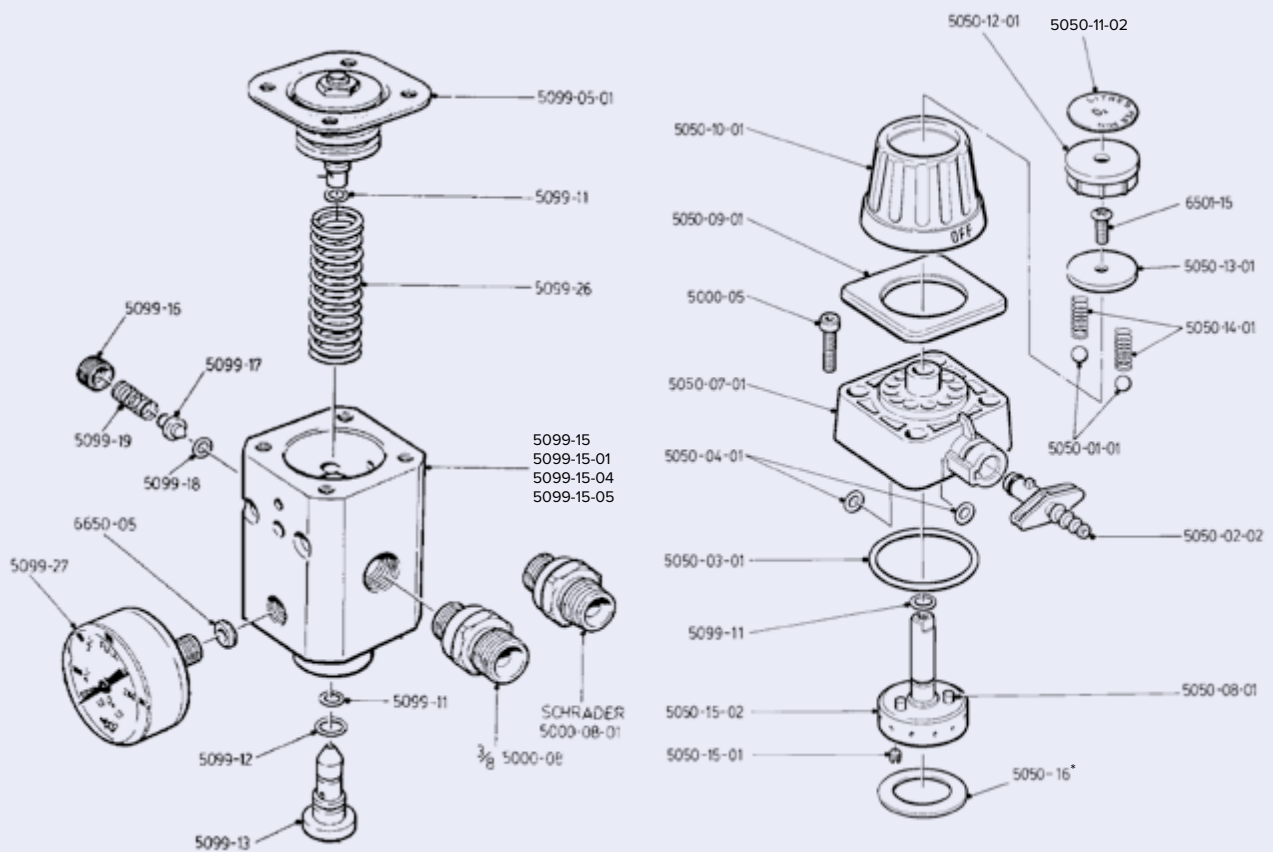
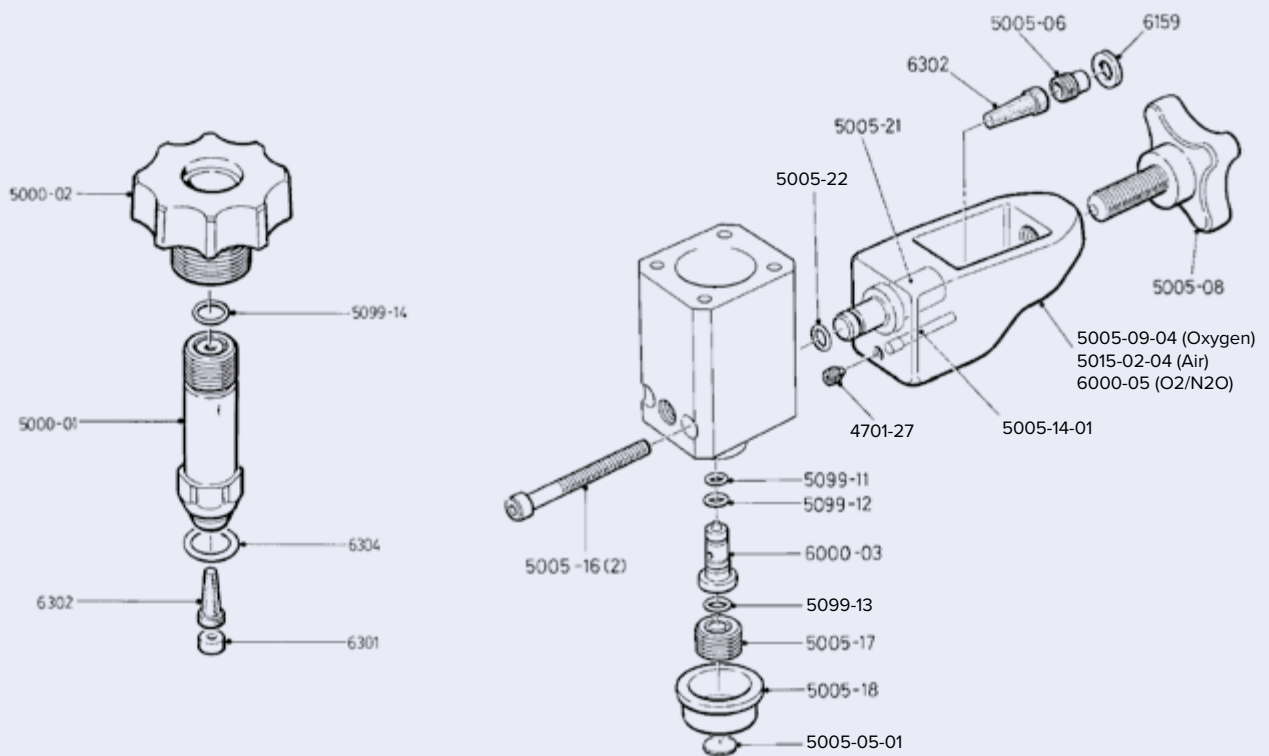
4701-01	Vacuum Probe for Therapy Equipment Suction Unit
4701-02	O Ring for Vacuum Probe
4701-03-01	Control Knob
4701-10	O Ring Seal for Pipeline Protector
4701-12	Filter for Thoracic Suction Unit
4701-16	On/Off Tap
4701-19	High Vacuum Gauge
4701-34	Name Ring
4701-54	Black O Ring for On/Off Tap
4701-64	White O Ring for On/Off Tap
4720-20	Low Vacuum Gauge
4740-21	Thoracic Vacuum Gauge
4701-68	Thoracic Filter Jar Assembly
4900	Pipeline Protector - Pack of 10
4701-16/Kit	On/Off Tap with O Rings kit

SUCTION JAR SPARES

4800-01	Jar Seal
4800-02	Jar Lid
4800-03	Receiver Jar Only
4800-04	Long Tapered Patient Connector
4800-05	Short Tapered Vacuum Connector
4800-10	Float Assembly
4800-14	Silicon Swirl Tube



SPARES MEDIREG



* Superseded by Stop Plate 5050-18 W.E.F 1/1/03

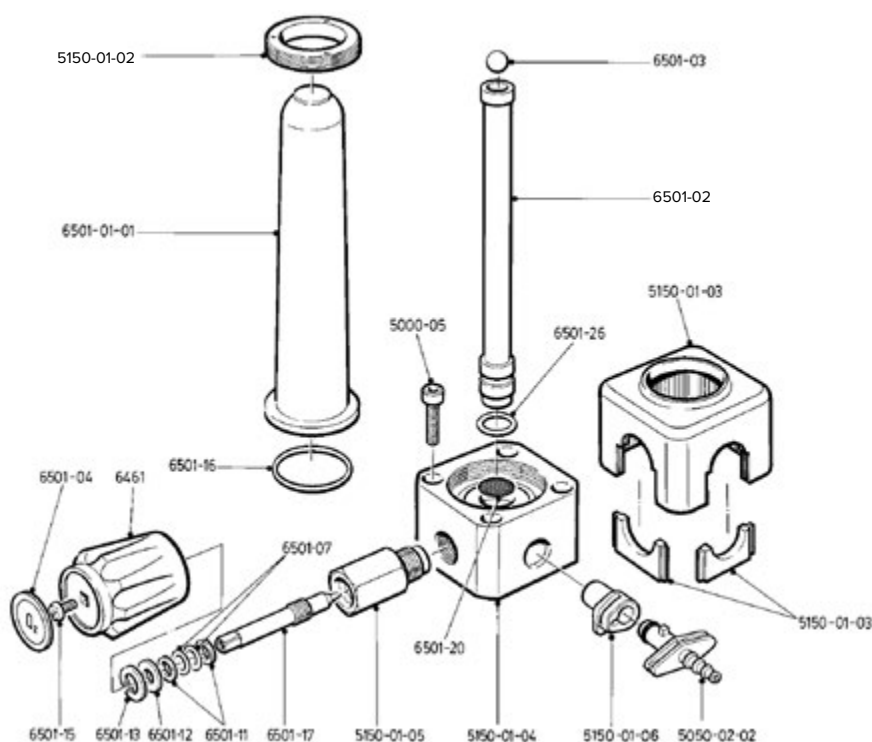
MEDIREGS / DIALREGS / FLOWREGS

5000-01-01	Bullnose Nipple Assembly
5000-02	Handwheel Assembly
5050-03	Top Cover
5000-04	Inner Cap
5000-06-22	Bullnose Label (2022)
5000-08	3/8 Outlet Connector
5000-08-01	Schrader Outlet Connector
5000-09	Oxygen Label
5000-09-01	Air Label
5005-05-22	Pin Index Disc (2022)
5005-06	Inlet Nipple - Yoke
5005-08	Pin Index Yoke Screw
5005-09-04	Oxygen Pin Index Yoke Only
5005-14-01	Pin Index Pin
5005-17	Threaded Plug
5005-21	Yoke Insert
5015-02-04	Air Pin Index Yoke Only
5050-01-01	Ball Bearing
5050-07-01	Dial Main Body
5050-08-01	Dialreg Pin
5050-09-01	Cover Plate
5050-10-01	Dialreg Control Knob - 0-15 LPM
5050-10-03	Dialreg Control Knob - 0-1 LPM (Complete with Flush setting)
5050-10-05	Dialreg Control Knob - 0-15 LPM (Low Start)
5050-10-07	Dialreg Control Knob - 2/4 LPM
5050-11-01	Dialreg Label - Air
5050-11-02	Dialreg Label - Oxygen
5050-12-01	Dialreg Cap
5050-13-01	Dialreg Disc - Clamping
5050-14-01	Dialreg Spring
5050-15-02	Metering Drum 0.15
5099-05-01	Diaphragm Assembly - Oxygen/Air
5099-08	2" Screws
5099-13	Jet Seating

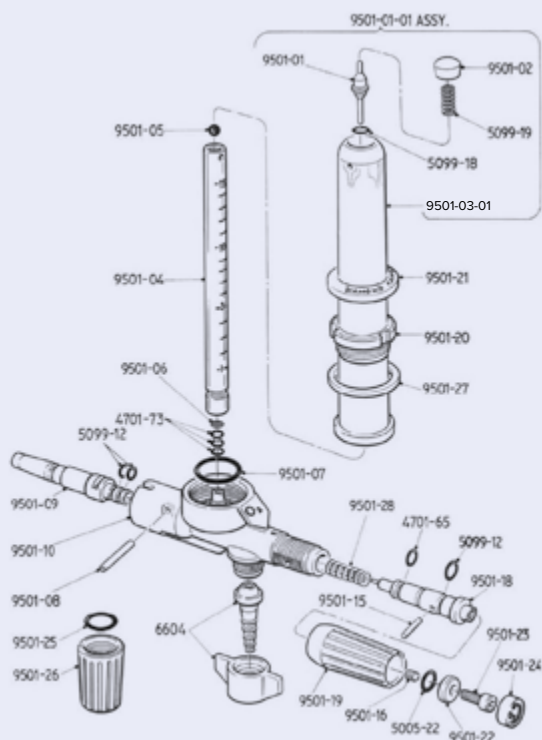
5099-15	Bullnose Main Body - Top Outlet
5099-15-01	Bullnose Main Body - Side Outlet
5099-15-04	Pin Index Main Body - Side Outlet
5099-15-05	Pin Index Main Body - Top Outlet
5099-16-01	Adjusting Screw
5099-17	Valve Body
5099-19	Safety Valve Spring
5099-20	Case - Front
5099-21	Case - Back - Oxygen
5099-21-01	Case - Back - Air
5099-22	Case - Base
5099-23	Serial Number Label (Black Print)
5099-24	Logo Label
5099-26	414kPa Spring
5099-27	Oxygen Gauge
5099-27-01	Gauge Glass
5099-28	Air Gauge
5150-01-02	Flowreg Clamping Ring
5150-01-03	Flowreg Cover
5150-01-04	Flowreg Flowmeter Main Body
5150-01-05	Flowreg Spindle Body
6000-01	Entonox Gauge
6000-03	Entonox Jet Seating
6000-05	Entonox Pin Index Yoke Only
6000-07	Entonox Diaphragm Assembly
5099-21-04	Case - Back - Entonox
6501-01-01	Flanged Outer Tube

Service Kits (All parts required in connection with 4 Yearly reconditioning):

5099-50	Bullnose Medireg Service Kit
5099-55	Pin Index Medireg Service Kit
5099-60	Bullnose Dialreg Service Kit
5099-65	Pin Index Dialreg Service Kit
5099-70	Bullnose Flowreg Service Kit
5099-75	Pin Index Flowreg Service Kit
6010-01	Pin Index O2/N2O Medireg Service Kit



SPARES DIAMOND FLOWMETER

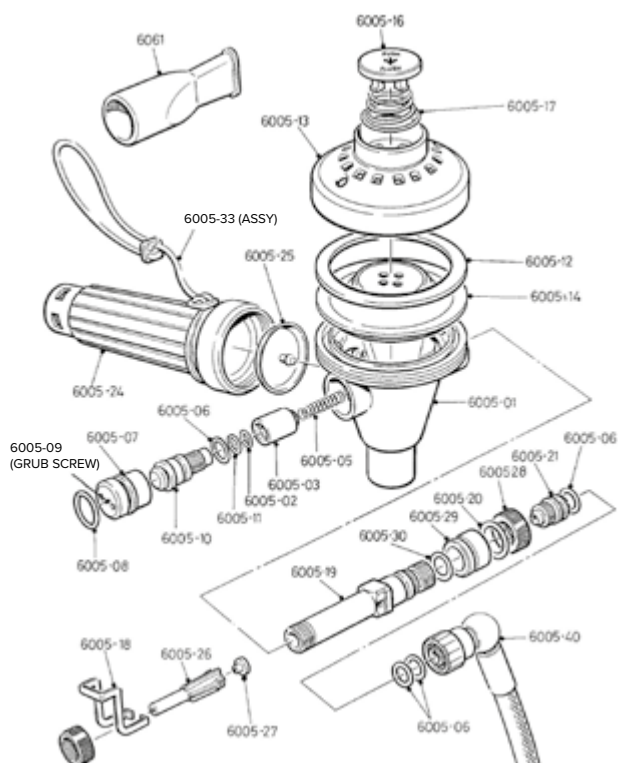


DIAMOND FLOWMETER SPARES

The Therapy Equipment Diamond Range Flowmeter is supplied with a 7 year warranty against malfunction and damage. In line with standard policy, all spares are available, however should not be required. In the event of breakage, please return the unit to therapy equipment ltd for a free of charge repair/replacement.

9501-26	Outlet Adaptor (to convert Male Outlet to Female)
9501-03-01	Diamond Flowmeter Outer Tube - O2
9501-04	Diamond Flowmeter Inner Tube - O2
9501-21	Diamond Flowmeter Cover Ring - O2

SPARES ENTONOX



COMFORT RANGE ANALGESIC EQUIPMENT SPARES

6005-60	2 Metre PVC Hose Assembly
6005-60/3M	3 Metre PVC "Entonox" Hose Assembly
6005-60/4M	4 Metre PVC "Entonox" Hose Assembly
6005-50	2 Metre Silicone Hose Assembly
6005-50/3M	3 Metre Silicone "Entonox" Hose Assembly
6005-50/4M	4 Metre Silicone "Entonox" Hose Assembly
6005-33	Wrist Strap
6815	Patient Facemask - Large
6816	Patient Facemask - Medium
6061	Patient Mouthpiece
6020-03/	30mm Plastic Tubing for AGSS System
COIL	(17 x 1.5m Sections)
6020-01	AGSS 30mm Male Connector
6020-02	AGSS 30mm Female Connector
6000-19	Spare Carry Case
6005-46	Demand Valve Reconditioning Kit (Valve Capsule; Valve Seat)
6005-47-22	Demand Valve Label (2022)
6005-48	Demand Valve Buffer Ring
6005-41	Demand Valve Elbow Connector
6005-24	Demand Valve Handle
6005-13	Demand Valve Cap
6005-16	Demand Valve Flush Button
6005-95	Demand Valve AGSS Cap

PARTNER PRODUCTS

Therapy Equipment have expanded its product range by signing a number of key exclusivity agreements with global market leading partners. These exciting partnerships will offer our loyal Therapy customers a greater range of products and services to support patient needs.



PORTABLE SUCTION

A range of portable suction devices for both Acute and Community use.

FAZZINI SUCTION DEVICES

10501	Fazzini F-18 Small portable suction device for Acute, Community wards and Ambulance Services
10601	Fazzini F-31 Portable suction device used for Acute wards, Emergency, ITU, and Community
10601/SERRES	Fazzini F-31 With Serres Bracket
10601-5	Box of 50 Filters
10701	Fazzini F-31 With Trolley Portable Suction with Trolley, used in Acute and Community wards
16001	Fazzini F-31 Trolley Only
10750	Fazzini 100R
10801	Fazzini F60B Mains/Battery portable suction device used for Acute wards, Emergency, ITU, and Community
10901	Fazzini F60 Mains only portable suction device used for Acute wards, Emergency, ITU, and Community



10501



10801



10901



11000



12000



13000

AIR-OXYGEN BLENDER

The air-oxygen 'Quality Mix' is used to administer a continuous, precise blend of medical air and medical oxygen

DEHAS QUALITY MIX AIR-OXYGEN BLENDER

11000	DEHAS Low Blender
11500	DEHAS High Blender
11000-01	DEHAS Module switchable bleed
11000-02	DEHAS Module pressure reducer
11000-03	DEHAS Module Oxygen Monitor
11000-04	DEHAS Mounting Unit for 3rd Party Oxygen monitors
11000-05	DEHAS Rail Mount
11000-06	DEHAS Flowmeter 0-3 LPM
11000-07	DEHAS Flowmeter 0-9-6 LPM
11000-08	DEHAS Flowmeter 0-15 LPM
11000-09	DEHAS Flowmeter3 2-32 LPM
11000-10	DEHAS Flowmeter8 5-85 LPM
11000-11	DEHAS D-B-BB-02 BlenderBuddy

PERGO THERAPY JARS

12000	Pergo 1 Ltr Jar
12500	Pergo 2 Ltr Jar
12000-01	Pergo 1 Ltr Liner (disposable use)
12500-01	Pergo 2 Ltr Liner (disposable use)
12000-02	Pergo 1 Ltr Jar Liner - Box of 100
12500-02	Pergo 2 Ltr Jar Liner - Box of 100

ACCESSORIES

Combined filter and mouthpiece

13000	Disposable Filter and Mouthpiece
-------	----------------------------------

INDEX

PRODUCT PAGE

A

Anti Static High Pressure Hose	22
Auroscopes - Repairs	28

B

Bodok Seals	7
Bullnose O Ring	7

C

Catheter Holder	23
Clamp - Rail	25
Comfort Range	20-21
Crimps	22
Cylinder Keys	7
Cylinder Rings and Brackets	23
Cylinder Cradles	23
Cylinder Trolleys	23

D

Disposable Suction Jar Liners	19
DISS/Probe Hose Assembly	22
Direct Dial Flowmeter	9
Diamond Range	9
Low Flow Flowmeter	9
Diamond Range Flowmeter	6
Diamond Range Flowmeter Spares	32
Diamond Package	13
Diamond Range Suction	12-13

E

Electric Suction	14
Emergency Suction Kits	15
Entonox Medireg - Repairs	27
Entonox Comfort Range - Spares	32
Entonox Medireg	21

F

Ferrules	22
Filters - Suction	19
Fixing Kits - Rail	25
Flowmeters	8-11
Flowmeters with Probe	11
Flowmeter Back Bars	9
Flowmeter - Direct Dial	11
Flowmeter - Low Flow	11
Flowmeter Outlets and Accessories	8
Flowmeter Repairs	28
Flowmeter Spares	29, 32
Flowmeter Diamond Range	8-9

PRODUCT PAGE

H

High Suction	12
HP Hose Assemblies	22
HP Hose Anti-Static	22
Hose Sleeving	22
Humidifiers (Nebulisers)	10
Hydrophobic Filters	19

I

Indirect Rail Mounting Assemblies	10
Injector Suction Kits	17

J

Jars - Suction	19
Jars - Suction - Spares	29

L

Low Suction Controller	13
Low Flow Flowmeters	11
Low Flow Flowmeter Spares	29

M

Medical Rail Systems	25-26
Mediregs	4
Medireg Spares	30-31
Multi Stage Regulator	7
Multi Stage Regulator - Repairs	27

N

NIST Nut & Liner	24
NIST/Probe Hose Assembly	22
New for Old - Mediregs	16
New for Old - Dialregs	16
New for Old - Flowmeters	17
New for Old - Flowregs	17
New for Old - Suction	17

P

Patient Trolley Suction	14
Peak Flowmeter - Repair	28
Pin Index Regulators	4-7
Pin Index Yokes	7
Pin Index Yoke Spares	31
Pipeline Protectors (Suction)	19
Probes - All Types	24

PRODUCT PAGE

R

Rail Fitting - Spares	25
Rail Mounting Kits	10
Rail Mounting Equipment	26
Rail Mounted Suction	12-13
Regulators	4-7
Regulators - Single Stage	4
Regulators - Reconditioning	27
Regulators - Spares	30-31
Regulators - Schrader Valve	6
Respirometer - Repairs	28

S

Schrader Extension Hoses	6
Schrader Valves	6
Self Sealing Valves	6-7
Single Stage Regulators	4-7
Spindle Keys	7
Suction Accessories	19
Suction Range	12-15
Suction - Electric	14
Suction Jars	19
Suction Jar Disposable Liners	19
Suction Controllers - High	12
Suction Controllers - Low	13
Suction Controllers - Thoracic	13
Suction - Injector Type	15
Suction - Pipeline Protectors	19
Suction Tubing	19
Suction Spares (Therapy Type)	29

T

TEK2000 Suction Kit	15
Therapy SOS Unit	18
Theatre Suction Trolley	14
Therapy Sets (Reg and Flow)	4
Thoracic Suction	13
Trolleys - Cylinder	23
Tubing Nipples - Flowmeters	10
Twin Flowmeters	9
Twin Schraders	6
Twin Suction	13

V

V Bracket	19
V Wall Plate	19
V Dovetail	19
Venturi Suction	14-15



THERAPY EQUIPMENT LTD

Unit 1, Cranbourne Avenue,
Cranbourne Industrial Estate,
Potters Bar, Herts. EN6 3JN

Tel: 01707 652270 Fax: 01707 652622

E-mail: sales@therapyequipment.co.uk

www.therapyequipment.co.uk

